



sangenic®

nappy disposal system

INSTRUCTIONS FOR USE

A. EASY TO SET UP

1. Pull film evenly out of refill.
2. Gather film together and push through.
3. Remove lid from base of unit.
4. Tie knot in film.
5. Use hook to secure knot.
6. Replace lid on base of unit.



B. EASY TO USE

1. Open lid ready for first nappy.
2. Push nappy until gripped.
3. Twist 360° clockwise until nappy is sealed.
4. Nappy is gone!
5. Plunge lid onto twisted film.
6. Fresh film is ready for next nappy.



C. EASY TO EMPTY

1. Remove lid from base unit.
2. Unhook knot and drop into base.
3. Pull additional film through to cut.
4. Use cutter blade to cut film.
5. Tub is ready to empty.



Any Questions?
 Visit our website:
 AUSTRALIA: tommeetippee.com.au
 NEW ZEALAND: tommeetippee.co.nz
 Or call us FREE on:
 AUSTRALIA: 1800 096 938
 NEW ZEALAND: 0800 726 436

Mayborn Group is a trading style of Sangenic International Limited.
 Mayborn ANZ Pty Ltd. (ABN 66 154 703 134)
 PO Box 475, Mt Waverley VIC 3149
 AUSTRALIA

Mayborn Group is a business name of Mayborn ANZ Pty Ltd.

Newborn Brands (NZ) Ltd.
 PO Box 47-677
 Ponsonby, Auckland 1144
 NEW ZEALAND

Copyright © Sangenic International Limited 2015

WARNING! Plastic film can be dangerous.
 To avoid suffocation keep plastic film away from babies
 and children. Do not store in or near babies' sleeping area.

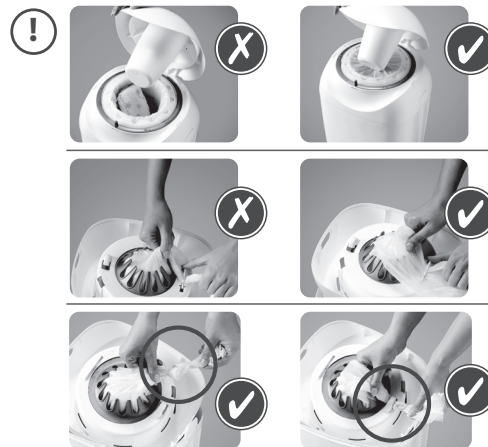
WARNING! To prevent injury, do not attempt to take this unit
 apart other than to replace the film or empty. User maintenance
 other than cleaning is not required.

WARNING! To prevent injury, do not stand or sit on this product.

WARNING! For adult use only.
 Do not allow your child to play with this product.

WARNING! Do not fill the product with water or other liquids.
 Serious accidents have occurred to babies and young children
 when products such as this have been filled with liquid.

WARNING! The cutter blade is very sharp. Keep hands clear
 of the blade area and be very careful when cutting the film.



Antibacterial protection is present in the film and not other components
 of this product.

Materials Listing: Polypropylene, thermoplastic elastomer, HDPE film.

Made in UK.

tommeetippee.com.au
tommeetippee.co.nz

74375003